

## Multi-Zone Indoor Unit Console



Model	Indoor Unit		MFA2U-09HRFN1-MY6W	MFA2U-12HRFN1-MW5W	MFA2U-16HRFN1-MV0W
<b>Performance</b>					
Power Supply	V, Ph, Hz		208/230, 1, 60	208/230, 1, 60	208/230, 1, 60
Air Flow Volume	H/M/L	CFM	376.47/323.53/264.71	376.47/323.53/264.71	441.18/382.35/323.53
Noise Level	H/M/L	dB(A)	40/37/26	40/37/26	45/43.5/30.5
<b>Dimension &amp; Weight</b>					
Net Dimension	WxDxH	mm	794x200x621	794x200x621	794x200x621
	WxDxH	inch	31.26x7.87x24.45	31.26x7.87x24.45	31.26x7.87x24.45
Packing Dimension	WxDxH	mm	865x280x719	865x280x719	865x280x719
	WxDxH	inch	34.06x11.02x28.31	34.06x11.02x28.31	34.06x11.02x28.31
Net/Gross Weight			kg	14.9/18.8	14.9/18.8
			lbs	32.85/41.45	32.85/41.45
<b>Stuffing Quantity</b>					
Stuffing Quantity	20'/40'/40'HQ	Indoor unit	168/344/390	168/344/390	168/344/390

## Multi-Zone Indoor Unit Ceiling & Floor



Model	Indoor Unit		MUEU-18HRFN1-M(C)	MUEU-24HRFN1-M(C)
<b>Performance</b>				
Power Supply	V, Ph, Hz		208/230, 1, 60	208/230, 1, 60
Air Flow Volume	H/M/L	CFM	548.24/485.29/420.59	758.82/708.24/598.24
Noise Level	H/M/L	dB(A)	48/44.5/41	51/47/42
<b>Dimension &amp; Weight</b>				
Net Dimension	WxDxH	mm	1068x675x235	1068x675x235
	WxDxH	inch	42.05x26.57x9.25	42.05x26.57x9.25
Packing Dimension	WxDxH	mm	1145x755x318	1145x755x318
	WxDxH	inch	45.08x29.72x12.52	45.08x29.72x12.52
Net/Gross Weight			kg	25.9/31
			lbs	57.10/68.34
<b>Stuffing Quantity</b>				
Stuffing Quantity	20'/40'/40'HQ	Indoor unit	102/220/252	102/220/252



## Midea DUCTED & DUCTLESS COMPATIBLE MULTI-ZONE SYSTEM

MEET THE MIDEA  
NEW CENTRAL SYSTEM





# What Is A Multi-Zone System

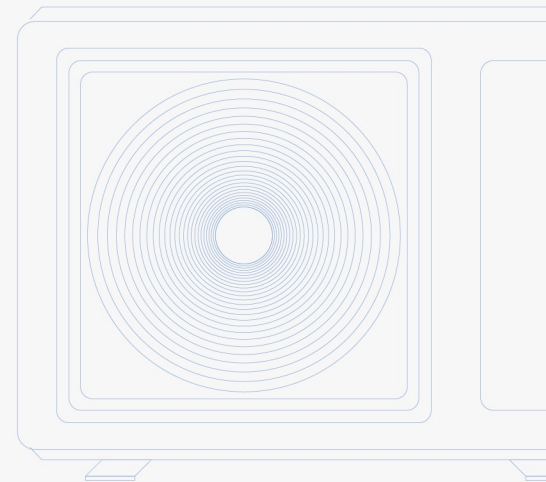
A multi-zone system connects only one outdoor unit to multiple indoor units, so it's capable of cooling or heating multiple indoor rooms. Each indoor unit can also be individually controlled, scheduled and set to the desired room temperature.

## Advantages of Multi-Zone Systems



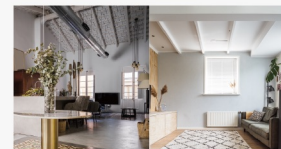
### WIDE SELECTION OF INDOOR UNITS

Provide a wide selection of indoor unit capacities and styles to suit a variety of room sizes and designs.



### SPACE SAVING AND LOW NOISE

Connect several indoor units to a single outdoor units, reduce installation space and outdoor noise.



### DUCTED & DUCTLESS

Add ductless units to the common ducted system.



### LOWER SYSTEM ELECTRIC POWER

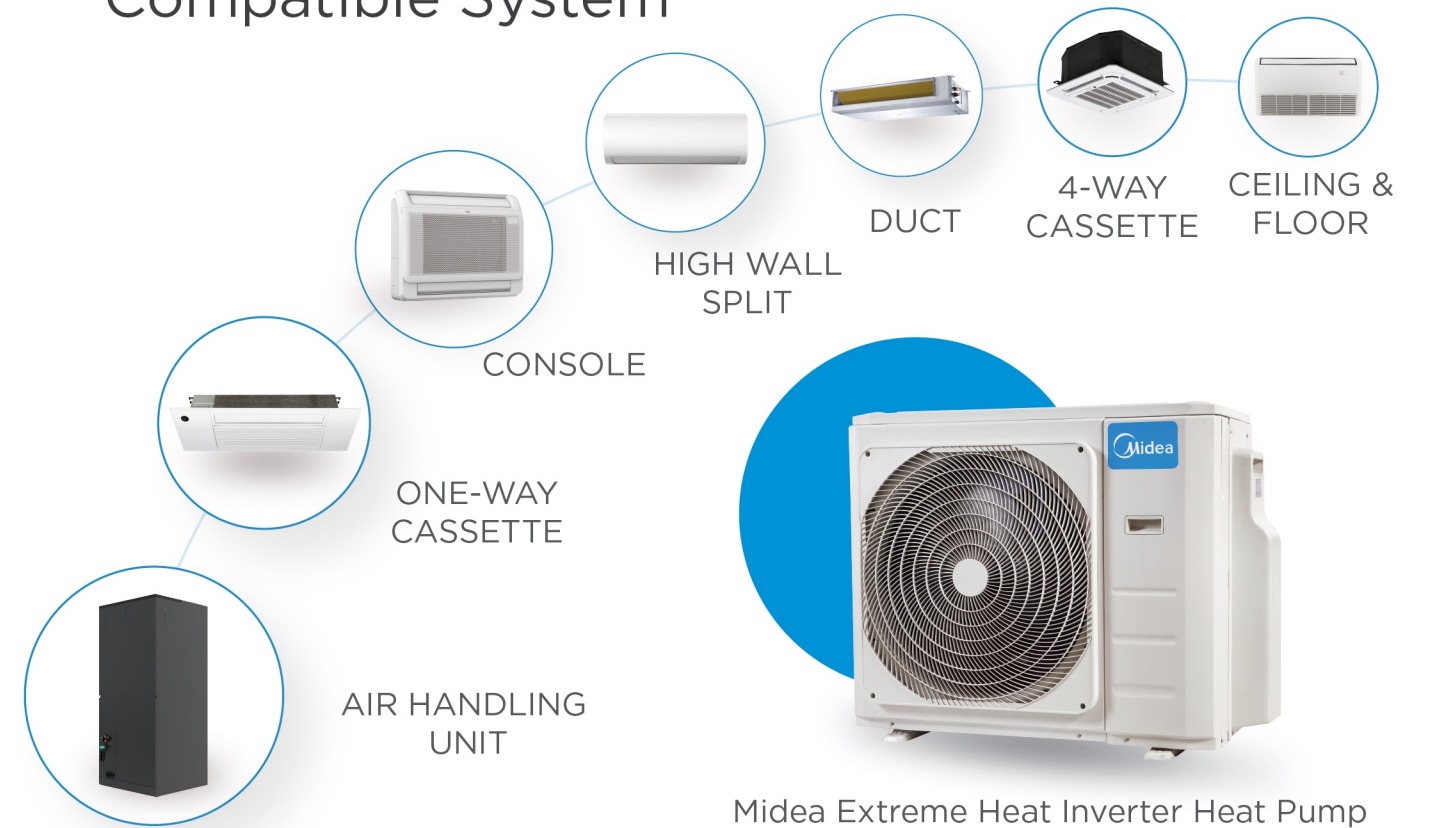
Achieve lower system total power, fit well with the application that sets the power/current limit for air conditioners or home appliances.



### INDIVIDUAL CONTROL

Provide individual control for each indoor unit. Bring desired comfort and Save energy as you can heat or cool only those rooms you are using and not the entire house.

## Ducted & Ductless Compatible System

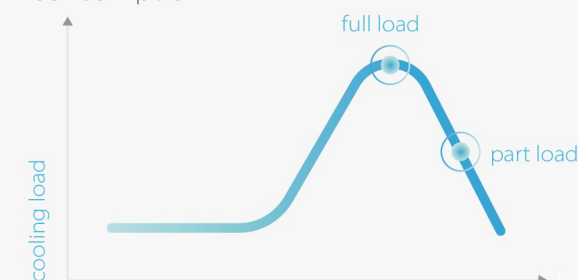


## High Efficiency & Expandability

### Inverter

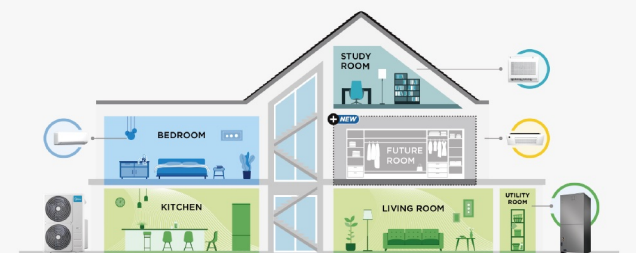
With innovative inverter technology, Midea's multi-zone system can adjust the capacity output as the temperature changes, by controlling the operation of compressor and fan motors.

When not all rooms require air conditioning or when ambient temperature changes, it runs with partial load and lower energy consumption.



### Expand your Existing Central Ducted System

Incorporating an AHU into the multi-zone system makes the system applicable to wider scenarios and conditions, allowing homeowners to keep their ducted system and add ductless units for additional climate control.





## More Efficiency

### Sustainable Lifestyle



#### Zoning Operation

Multi-zone applications are a more sustainable way to heat and cool by customizing comfort for each room. Homeowners can precisely heat and cool only the areas needed and turn off the unit when the area isn't occupied.

## True Comfort for Every Space

Homeowners can set temperatures and modes individually to customize comfort in multiple spaces. Using different operating conditions or modes based on typical usage of a different rooms like a living room, bedrooms or an office helps save energy and optimize comfort.



## More Flexibility

### Power up to 5 Zones



With SEER2 up to 24.6, The Midea Extreme heat pump has higher energy efficiency and superior heating performance in a low ambient environment. Also, with a larger capacity of powering up to 5 zones, it is one of the most powerful heat pumps in a multi-zone application.

## One System, With the Best of Both Worlds



#### AHU + Ductless

The system can add up to 4 ductless units to the current ducted air handler using the same outdoor unit. This can cover areas that are hard to heat or cool, occupied less often, or part of an addition. The EVOX multi-zone heat pump system is a great solution for more custom heating and cooling needs.



#### AHU + AHU

No need to change a homeowner's HVAC habits. This large capacity system not only lets users install up to a 3-ton AHU, but also allows users to put two AHUs on one heat pump in a residential multi-zone application.



# Wide Variety of Indoor Units for Residential Applications

A comprehensive indoor lineup with 7 types and 33 models with tailored designs for different spaces and functions. This product line has flexibility to combine ductless and ducted indoor units or incorporate an A-Coil to the system.

## Ductless Units



Console  
0.75-1.5 TONS

2'x2' 4-Way  
Cassette  
0.75-2 TONS

Wall-Mounted  
0.5-3 TONS

One-Way  
Cassette  
0.5-1.5 TONS

Ceiling & Floor  
1.5-2 TONS

## Ducted Units

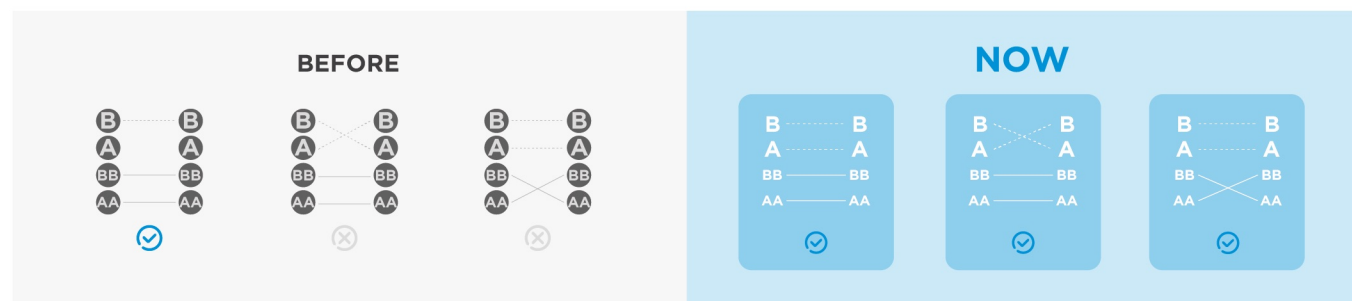
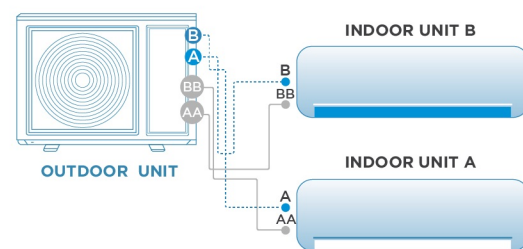


Slim Duct  
0.75-2 TONS

Air Handling Unit  
1.5-3 TONS

## Easy Wiring

With SynchroConnect technology, the Midea multi-zone systems can self-diagnose the connection status after the installer connects the wires and line sets, to see whether they're right or wrong. And what's more amazing is, with proper wiring between indoor units and the condenser, the system can automatically synchronize the refrigerant lines to the wires, even when the lines are connected to the wrong ports, and vice versa. That means when dealing with line sets and wires, Midea installers can focus on correctly connecting the refrigerant lines, or the wires, and the other will automatically match to it with the activation of SynchroConnect technology.



# INVERTER HEAT PUMP

**1.5-5**  
Tons Available

**REGULAR  
EXTREME &**  
Heat Pumps Available

**UP TO 24.6**  
SEER2





# Compatibility Multi-zone

INDOOR UNIT		HEAT PUMP OUTDOOR UNIT-Regular Heat					HEAT PUMP OUTDOOR UNIT-Extreme Heat				
		M2OA-18HFN1-M	M3OJ-27HFN1-M	M4OG-36HFN1-M	M5OG-48HFN1-M	M5OA-55HFN1-M	M2OI-18HFN1-M	M3OK-27HFN1-M	M4OX630-36HFN1-MIX	M5OG-48HFN1-M-[X]	M5OA-55HFN1-M-[X]
INFINI High Wall	MSAG11A-06HRFN1-MU0W	●	●	●	●	●	●	●	●	●	●
	MSAG11B-09HRFN1-MX7W(GA)	●	●	●	●	●	●	●	●	●	●
	MSAG11B-12HRFN1-MV0W(GA)	●	●	●	●	●	●	●	●	●	●
	MSAG11D-18HRFN1-MT8W	x	●	●	●	●	●	●	●	●	●
	MSAG11D-23HRFN1-MU0W	x	●	●	●	●	●	●	●	●	●
	MSAGF-33HRFN1-MSR0W	x	x	x	●	●	x	x	●	●	●
	MSAGF-30HRFN1-MT0W	x	x	●	●	●	x	●	●	●	●
	MSAGF-36HRFNX-MR0W	x	x	x	●	●	x	x	●	●	●
All Easy Pro High Wall	MSEPB-06HRFN1-MY5W	●	●	●	●	●	●	●	●	●	●
	MSEPB-09HRFN1-MY5W(GA)	●	●	●	●	●	●	●	●	●	●
	MSEPB-12HRFN1-MW5W(GA)	●	●	●	●	●	●	●	●	●	●
	MSEPC-18HRFN1-MU0W	x	●	●	●	●	●	●	●	●	●
	MSEPD-24HRFN1-MU0W	x	●	●	●	●	●	●	●	●	●
	MSEPD-33HRFN1-MSR0W	x	x	x	●	●	x	x	●	●	●
	MSEPD-30HRFN1-MS8W	x	x	●	●	●	x	●	●	●	●
	MSEPD-36HRFN1-MQ0W	x	x	x	●	●	x	x	●	●	●
AURORA High Wall	MSABB-09HRFN1-MX0W	●	●	●	●	●	●	●	●	●	●
	MSABB-12HRFN1-MV0W	●	●	●	●	●	●	●	●	●	●
	MSABE-18HRFN1-MW5W	x	●	●	●	●	●	●	●	●	●
	MSABE-24HRFN1-MU0W	x	●	●	●	●	●	●	●	●	●
	MSABF-30HRFN1-MR0W	x	x	●	●	●	x	●	●	●	●
	MSABF-36HRFNX-MQ0W	x	x	x	●	●	x	x	●	●	●
4-way Cassette	MCA3U-09HRFN1-MⓄ	●	●	●	●	●	●	●	●	●	●
	CCA3U-12HRFN1-M(C)	●	●	●	●	●	●	●	●	●	●
	CCA3U-18HRFN1-M(C)	x	●	●	●	●	●	●	●	●	●
	MCD1-24HRFN1-MT0W(GA)	x	●	●	●	●	●	●	●	●	●
1-way Cassette	MCBU-06HRFN1-MV0W	●	●	●	●	●	●	●	●	●	●
	MCBU-09HRFN1-MW0W	●	●	●	●	●	●	●	●	●	●
	MCBU-12HRFN1-MV0W	●	●	●	●	●	●	●	●	●	●
	MCBU-18HRFN1-MU2W	x	●	●	●	●	●	●	●	●	●
Console	MFA2U-12HRFN1-MW5W	●	●	●	●	●	●	●	●	●	●
	MFA2U-16HRFN1-MV0W	x	●	●	●	●	●	●	●	●	●
Ceiling&Floor	MUEU-18HRFN1-M(C)	x	●	●	●	●	●	●	●	●	●
	MUEU-24HRFN1-M(C)	x	●	●	●	●	●	●	●	●	●
Slim Duct	MTIU-09HWFN1-M	●	●	●	●	●	●	●	●	●	●
	MTIU-12HWFN1-M	●	●	●	●	●	●	●	●	●	●
	MTIU-18HWFN1-M	x	●	●	●	●	●	●	●	●	●
	MTIU-24HWFN1-M	x	x	●	●	●	x	x	●	●	●
AHU	MVC-18HWFN1-MW(GA)	x	●	●	●	●	x	●	●	●	●
	MVC-23HWFN1-M	x	x	●	●	●	x	x	●	●	●
	MVC-30HWFN1-M(GA)	x	x	x	●	●	x	x	x	●	●
	MVCU-36HWFN1-M(GA)	x	x	x	●	●	x	x	x	●	●

●	AVAILABLE / COMPATIBLE
x	NOT AVAILABLE / COMPATIBLE

Notes: A maximum two (2) AHUs can be added to a MZ system. Refer to the application tables in the product data for allowed combinations. Regardless of size, when two (2) AHUs are connected to any MZ ODU, no other indoor units can be added to the system. If a 30k or 36k AHU is connected to a any outdoor unit, 500g (17.6 Oz) of additional refrigerant charge has to be added to the system, 30+30 or 30+36 or 36+36 combination (AHU) are not available.



## Multi-Zone Outdoor Unit Extreme Heat

(Matched with Non-Ducted)



Model	Indoor Unit		MSEP-B-09HRFNI-MY5W(GA)*2	MSEP-B-09HRFNI-MY5W(GA)*3	MSEP-B-09HRFNI-MY5W(GA)*4	MSEP-B-09HRFNI-MY5W(GA)*4+ MSEP-B-12HRFNI-MW5W(GA)*1	MSEP-B-09HRFNI-MY5W(GA)*2+ MSEP-B-12HRFNI-MW5W(GA)*3	
	Outdoor Unit		M2OI-18HFNI-M	M3OK-27HFNI-M	M4OX630-36HFNI-MIX	M5OG-48HFNI-M-[X]	M5OA-55HFNI-M-[X]	
System			2 Zones	3 Zones	4 Zones	5 Zones	5 Zones	
<b>Performance</b>								
Power Supply		V, Ph, Hz	208/230, 1, 60	208/230, 1, 60	208/230, 1, 60	208/230, 1, 60	208/230, 1, 60	
SEER2 (AHRI 210/240 - 2023)	Cooling /Heating Capacity		Btu/h	19000/20000	27000/27000	36000/36000	48000/49000	55000/55000
	SEER2		Btu/w	22.0	21.8	22.4	21.8	22
	EER2		Btu/w	12.5	12.2	12.5	11.7	10.5
	HSPF4		Btu/w	9.8	10	10.9	9.80	9.5
Heating at 5°F (-15°C)	Rated capacity		Btu/h	19700	27000	37000	45000	46000
	COP		W/W	1.9	1.8	2	2.0	1.9
Outdoor Air Flow Volume		Max	CFM	2129.41	2147.06	3035.29	4500.00	4500.00
Noise Level			dB(A)	61	62	65	65	63
<b>Outdoor unit</b>								
Net Dimension	WxDxH		mm	946x410x810	946x410x810	980x415x975	952x415x1333	952x415x1333
	WxDxH		inch	37.24x16.14x31.89	37.24x16.14x31.89	38.58x16.34x38.39	37.48x16.34x52.48	37.48x16.34x52.48
Packing Dimension	WxDxH		mm	1090x500x885	1090x500x885	1145x500x1080	1095x495x1480	1095x495x1480
	WxDxH		inch	42.91x19.69x34.84	42.91x19.69x34.84	45.08x19.69x42.52	43.11x19.49x58.27	43.11x19.49x58.27
Net/Gross Weight			kg	62.7/67.6	74.8/80.5	97/112	108.1/122.4	105.7/120.6
			lbs	138.23/149.03	164.90/177.47	213.85/246.92	238.32/269.84	233.03/265.87
<b>Stuffing Quantity</b>								
Stuffing Quantity		20'/40'/40'HQ	Unit	44/96/138	44/96/138	44/92/92	22/48/48	22/48/48

## Multi-Zone Outdoor Unit Regular Heat

(Matched with Non-Ducted)



Model	Indoor Unit		MSEP-B-09HRFNI-MY5W(GA)*2	MSEP-B-09HRFNI-MY5W(GA)*3	MSEP-B-09HRFNI-MY5W(GA)*4	MSEP-B-09HRFNI-MY5W(GA)*4+ MSEP-B-12HRFNI-MW5W(GA)*1	MSEP-B-09HRFNI-MY5W(GA)*2+ MSEP-B-12HRFNI-MW5W(GA)*3	
	Outdoor Unit		M2OA-18HFNI-M	M3OJ-27HFNI-M	M4OG-36HFNI-M	M5OG-48HFNI-M	M5OA-55HFNI-M	
System			2 Zones	3 Zones	4 Zones	5 Zones	5 Zones	
<b>Performance</b>								
Power Supply		V, Ph, Hz	208/230, 1, 60	208/230, 1, 60	208/230, 1, 60	208/230, 1, 60	208/230, 1, 60	
SEER2 (AHRI 210/240 - 2023)	Cooling /Heating Capacity		Btu/h	18000/19000	28000/28000	36000/37000	48000/48000	55000/55000
	SEER2		Btu/w	22.9	24.6	23.9	23.4	21.3
	EER2		Btu/w	13.9	13.4	11.7	12.5	10.5
	HSPF4		Btu/w	10.5	10	9.5	8.7	9.1
Heating at 5°F (-15°C)	Rated capacity		Btu/h	12600	18500	25200	33000	33200
	COP		W/W	2	1.9	1.8	1.8	1.8
Outdoor Air Flow Volume		Max	CFM	1764.71	2129.41	2147.06	4500.00	4500.00
Noise Level			dB(A)	58.5	61	63	64	62
<b>Outdoor unit</b>								
Net Dimension	WxDxH		mm	890x342x673	946x410x810	946x410x810	952x415x1333	952x415x1333
	WxDxH		inch	35.04x13.46x26.50	37.24x16.14x31.89	37.24x16.14x31.89	37.48x16.34x52.48	37.48x16.34x52.48
Packing Dimension	WxDxH		mm	995x398x740	1090x500x885	1090x500x885	1095x495x1480	1095x495x1480
	WxDxH		inch	39.17x15.67x29.13	42.91x19.69x34.84	42.91x19.69x34.84	43.11x19.49x58.27	43.11x19.49x58.27
Net/Gross Weight			kg	45.5/49.3	63.4/68.3	76.7/82.3	102.3/116.4	101.7/116.7
			lbs	100.31/108.69	139.77/150.57	169.09/181.44	225.53/256.62	224.21/257.28
<b>Stuffing Quantity</b>								
Stuffing Quantity		20'/40'/40'HQ	Unit	99/198/198	44/96/138	44/96/138	22/48/48	22/48/48



## Multi-Zone Outdoor Unit Extreme Heat

(Matched with Ducted)



Model	Indoor Unit		MTIU-09HWFN1-M*2	MTIU-09HWFN1-M*3	MTIU-09HWFN1-M*4	MTIU-09HWFN1-M*4+ MTIU-12HWFN1-M*1	MTIU-09HWFN1-M*2+ MTIU-12HWFN1-M*3	
	Outdoor Unit		M2OI-18HFN1-M	M3OK-27HFN1-M	M4OX630-36HFN1-MIX	M5OG-48HFN1-M-[X]	M5OA-55HFN1-M-[X]	
System			2 Zones	3 Zones	4 Zones	5 Zones	5 Zones	
<b>Performance</b>								
Power Supply	V, Ph, Hz		208/230, 1, 60	208/230, 1, 60	208/230, 1, 60	208/230, 1, 60	208/230, 1, 60	
SEER2 (AHRI 210/240 - 2023)	Cooling /Heating Capacity		Btu/h	19000/20000	27000/27000	36000/36000	47000/49000	55000/55000
	SEER2		Btu/w	19	19	19.4	20.9	18.8
	EER2		Btu/w	12.0	11.8	11.8	11.7	10.5
	HSPF4		Btu/w	9.3	10	10	8.9	9.3
Heating at 5°F (-15°C)	Rated capacity		Btu/h	19000	27000	36000	42500	46000
	COP		W/W	1.85	1.8	1.9	2	1.9
Outdoor Air Flow Volume	Max		CFM	2129.41	2147.06	3035.29	4500.00	4500.00
Noise Level			dB(A)	61	62	65	65	63
<b>Outdoor unit</b>								
Net Dimension	WxDxH		mm	946x410x810	946x410x810	980x415x975	952x415x1333	952x415x1333
	WxDxH		inch	37.24x16.14x31.89	37.24x16.14x31.89	38.58x16.34x38.39	37.48x16.34x52.48	37.48x16.34x52.48
Packing Dimension	WxDxH		mm	1090x500x885	1090x500x885	1145x500x1080	1095x495x1480	1095x495x1480
	WxDxH		inch	42.91x19.69x34.84	42.91x19.69x34.84	45.08x19.69x42.52	43.11x19.49x58.27	43.11x19.49x58.27
Net/Gross Weight			kg	62.7/67.6	74.8/80.5	97/112	108.1/122.4	105.7/120.6
			lbs	138.23/149.03	164.90/177.47	213.85/246.92	238.32/269.84	233.03/265.87
<b>Stuffing Quantity</b>								
Stuffing Quantity	20'/40'/40'HQ		Unit	44/96/138	44/96/138	44/92/92	22/48/48	22/48/48

## Multi-Zone Outdoor Unit Regular Heat

(Matched with Ducted)



Model	Indoor Unit		MTIU-09HWFN1-M*2	MTIU-09HWFN1-M*3	MTIU-09HWFN1-M*4	MTIU-09HWFN1-M*4+ MTIU-12HWFN1-M*1	MTIU-09HWFN1-M*2+ MTIU-12HWFN1-M*3	
	Outdoor Unit		M2OA-18HFN1-M	M3OJ-27HFN1-M	M4OG-36HFN1-M	M5OF-48HFN1-M	M5OA-55HFN1-M	
System			2 Zones	3 Zones	4 Zones	5 Zones	5 Zones	
<b>Performance</b>								
Power Supply	V, Ph, Hz		208/230, 1, 60	208/230, 1, 60	208/230, 1, 60	208/230, 1, 60	208/230, 1, 60	
SEER2 (AHRI 210/240 - 2023)	Cooling /Heating Capacity		Btu/h	18000/19000	28000/28000	36000/37000	48000/50000	55000/55000
	SEER2		Btu/w	19.0	21	20	20.5	19
	EER2		Btu/w	12.0	11.7	11.0	10.8	10.5
	HSPF4		Btu/w	9.8	9.2	9.2	9.7	8.6
Heating at 5°F (-15°C)	Rated capacity		Btu/h	13300	18700	24000	33000	33200
	COP		W/W	2	2	1.68	1.7	1.7
Outdoor Air Flow Volume	Max		CFM	1764.71	2129.41	2147.06	4500.00	4500
Noise Level			dB(A)	58.5	61	63	62	62.00
<b>Outdoor unit</b>								
Net Dimension	WxDxH		mm	890x342x673	946x410x810	946x410x810	952x415x1333	952x415x1333
	WxDxH		inch	35.04x13.46x26.50	37.24x16.14x31.89	37.24x16.14x31.89	37.48x16.34x52.48	37.48x16.34x52.48
Packing Dimension	WxDxH		mm	995x398x740	1090x500x885	1090x500x885	1095x495x1480	1095x495x1480
	WxDxH		inch	39.17x15.67x29.13	42.91x19.69x34.84	42.91x19.69x34.84	43.11x19.49x58.27	43.11x19.49x58.27
Net/Gross Weight			kg	45.5/49.3	63.4/68.3	76.7/82.3	102.3/116.4	101.7/116.7
			lbs	100.31/108.69	139.77/150.57	169.09/181.44	225.53/256.62	224.21/257.28
<b>Stuffing Quantity</b>								
Stuffing Quantity	20'/40'/40'HQ		Unit	99/198/198	44/96/138	44/96/138	22/48/48	22/48/48

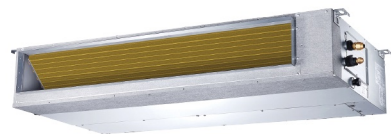


## Multi-Zone Indoor Unit Air Handling Unit



Model	Indoor Unit		MVC-18HWFN1-MW(GA)	MVC-23HWFN1-M	MVC-30HWFN1-M(GA)	MVCU-36HWFN1-M(GA)
<b>Performance</b>						
Power Supply		V, Ph, Hz	208/230, 1, 60	208/230, 1, 60	208/230, 1, 60	208/230, 1, 60
Air Flow Volume	H/M/L	CFM	576/529/488	758/694/629	894/805/71	1082/970/864
Noise Level	H/M/L	dB(A)	38.5/35/34	42/40/38.0	40/38/36	50/45/42.5
<b>Indoor unit</b>						
Net Dimension	WxDxH	mm	534x445x1143	534x445x1143	534x534x1245	534x534x1245
	WxDxH	inch	21.02x17.52x45.00	21.02x17.52x45.00	21.02x21.02x49.02	21.02x21.02x49.02
Packing Dimension	WxDxH	mm	675x530x1235	675x530x1235	675x620x1335	675x620x1335
	WxDxH	inch	26.57x20.87x48.62	26.57x20.87x48.62	26.57x24.41x52.56	26.57x24.41x52.56
Net/Gross Weight		kg	48.4/57.7	48.4/57.7	58.8/69.4	58.8/69.4
		lbs	106.70/127.21	106.70/127.21	129.63/153.00	129.63/153.00
<b>Stuffing Quantity</b>						
Stuffing Quantity	20'/40'/40'HQ	Indoor unit	36/74/148	36/74/148	27/57/114	27/57/114

## Multi-Zone Indoor Unit Slim Duct



Model	Indoor Unit		MTIU-09HWFN1-M	MTIU-12HWFN1-M	MTIU-18HWFN1-M	MTIU-24HWFN1-M
<b>Performance</b>						
Power Supply		V, Ph, Hz	208/230, 1, 60	208/230, 1, 60	208/230, 1, 60	208/230, 1, 60
Air Flow Volume	H/M/L	CFM	352.94/282.35/176.47	352.94/282.35/176.47	529.41/450.00/370.59	775.47/693.06/434.88
Noise Level	H/M/L	dB(A)	33.5/28.5/27	38/34.5/31	43/40.5/38	44/41/37
<b>Dimension &amp; Weight</b>						
Net Dimension	WxDxH	mm	700x506x200	700x506x200	880x674x210	1100x774x249
	WxDxH	inch	27.56x19.92x7.87	27.56x19.92x7.87	34.65x28.53x8.27	43x30x10
Packing Dimension	WxDxH	mm	860x540x285	860x540x285	1070x725x280	1305x805x315
	WxDxH	inch	33.86x21.26x11.22	33.86x21.26x11.22	42.13x28.54x11.02	51x32x12.4
Net/Gross Weight		kg	17.7/21.9	17.8/22	25.1/30.4	41/48
		lbs	37.5/48.3	39.24/48.5	54/66	90.39/105.82
<b>Stuffing Quantity</b>						
Stuffing Quantity	20'/40'/40'HQ	Indoor unit	214/461/519	214/461/519	120/264/297	77/161/184



## Multi-Zone Indoor Unit Wall-Mounted All Easy Pro



Model	Indoor Unit	MSEPB-06HRFNI-MY5W	MSEPB-09HRFNI-MY5W(GA)	MSEPB-12HRFNI-MW5W(GA)	MSEPC-18HRFNI-MUOW	MSEPD-24HRFNI-MUOW	MSEPD-30HRFNI-MS3W	MSEPD-33HRFNI-MSROW	MSEPD-36HRFNI-MQOW	
<b>Performance</b>										
Power Supply	V, Ph, Hz	208/230, 1, 60	208/230, 1, 60	208/230, 1, 60	208/230, 1, 60	208/230, 1, 60	208/230, 1, 60	208/230, 1, 60	208/230, 1, 60	208/230, 1, 60
Air Flow Volume	H/M/L	CFM	317.65/217.65/167.65	335.29/229.41/176.47	335.29/229.41/176.47	523.53/376.47/305.88	611.18/414.12/318.82	646.47/505.29/382.35	1310/1020/720	639.41/505.88/382.35
Noise Level	H/M/L	dB(A)	36/32/23	38/33.5/23.5	38/33.5/23.5	46/42/24	46/39/34	46/40.5/33	52/46/35	47.5/42/35.5
<b>Dimension &amp; Weight</b>										
Net Dimension	WxDxH	mm	795x225x295	795x225x295	795x225x295	965x239x319	1140x275x370	1140x275x370	1140x275x370	1140x275x370
	WxDxH	inch	31.30x8.86x11.61	31.30x8.86x11.61	31.30x8.86x11.61	37.99x9.41x12.56	44.88x10.83x14.57	44.88x10.83x14.57	44.88x10.83x14.57	44.88x10.83x14.57
Packing Dimension	WxDxH	mm	870x370x305	870x370x305	870x370x305	1045x400x325	1230x455x355	1230x455x355	1230x455x355	1230x455x355
	WxDxH	inch	34.25x14.57x12.01	34.25x14.57x12.01	34.25x14.57x12.01	41.14x15.75x12.80	48.43x17.91x13.98	48.43x17.91x13.98	48.43x17.91x13.98	48.43x17.91x13.98
Net/Gross Weight		kg	10.3/13.1	10.3/13.1	10.4/13.1	12.3/16.2	19.8/24.9	19.8/24.9	19.7/25	19.8/24.9
		lbs	22.71/28.88	22.71/28.88	22.93/28.88	27.12/35.71	43.65/54.89	43.65/54.89	43.43/55.11	43.65/54.89
<b>Stuffing Quantity</b>										
Stuffing Quantity	20'/40'/40'HQ	Indoor unit	298/611/706	298/611/706	298/611/706	227/460/533	143/297/348	143/297/348	143/297/348	143/297/348

## Multi-Zone Indoor Unit Wall-Mounted INFINI



Model	Indoor Unit	MSAGT1A-06HRFNI-MUOW	MSAGT1B-09HRFNI-MX7W(GA)	MSAGT1B-12HRFNI-MVOW(GA)	MSAGT1D-18HRFNI-MT8W	MSAGT1D-23HRFNI-MUOW	MSAGF-30HRFNI-MTOW	MSAGF-33HRFNI-MSROW	MSAGF-36HRFNX-MROW	
<b>Performance</b>										
Power Supply	V, Ph, Hz	208/230, 1, 60	208/230, 1, 60	208/230, 1, 60	208/230, 1, 60	208/230, 1, 60	208/230, 1, 60	208/230, 1, 60	208/230, 1, 60	208/230, 1, 60
Air Flow Volume	H/M/L	CFM	247.06/176.47/141.18	291.18/194.12/152.94	291.18/194.12/152.94	530.59/458.82/382.35	601.18/458.82/382.35	701.76/535.88/380.00	704/530/449	652.94/447.06/329.41
Noise Level	H/M/L	dB(A)	38.5/33/20.5	40/35/23.5	41.5/36/24	46/40/25	46.5/44/35	49.5/43.5/39.5	52/45.5/29.5	54/45/40
<b>Dimension &amp; Weight</b>										
Net Dimension	WxDxH	mm	729x200x292	802x200x295	802x200x295	1083x244x336	1082x234x337	1259x283x362	1259x283x362	1259x283x362
	WxDxH	inch	28.70x7.87x11.50	31.57x7.87x11.61	31.57x7.87x11.61	42.64x9.61x13.23	42.60x9.21x13.27	49.57x11.14x14.25	49.57x11.14x14.25	49.57x11.14x14.25
Packing Dimension	WxDxH	mm	790x270x375	875x285x380	875x285x380	1155x415x315	1155x415x315	1340x450x385	1340x450x385	1340x450x385
	WxDxH	inch	31.10x10.63x14.76	34.45x11.22x14.96	34.45x11.22x14.96	45.47x16.34x12.40	45.47x16.34x12.40	52.76x17.72x15.16	52.76x17.72x15.16	52.76x17.72x15.16
Net/Gross Weight		kg	8.0/10.2	8.6/11	8.5/11	13.4/17	13.6/17.3	19.5/25.2	19.7/25.6	19.4/25.2
		lbs	17.64/22.49	18.96/24.25	18.74/24.25	29.54/37.48	29.98/38.14	42.99/55.56	43.43/56.44	42.77/55.56
<b>Stuffing Quantity</b>										
Stuffing Quantity	20'/40'/40'HQ	Indoor unit	370/760/860	300/630/720	300/630/720	195/400/464	195/400/464	130/264/300	130/264/300	130/264/300

## Multi-Zone Indoor Unit Wall-Mounted AURORA



Model	Indoor Unit	MSABB-09HRFNI-MXOW	MSABB-12HRFNI-MVOW	MSABE-18HRFNI-MW5W	MSABE-24HRFNI-MUOW	MSABF-30HRFNI-MROW	MSABF-36HRFNX-MQOW
<b>Performance</b>							
Power Supply	V, Ph, Hz	208/230, 1, 60	208/230, 1, 60	208/230, 1, 60	208/230, 1, 60	208/230, 1, 60	208/230, 1, 60
Air Flow Volume	H/M/L	CFM	264.71/205.88/141.18	305.88/211.76/147.06	470.59/352.94/294.12	617.65/470.59/323.53	794.12/617.65/470.59
Noise Level	H/M/L	dB(A)	37/30/21	37.5/30/21.5	43/35.5/29	47.5/42/32	52/48.5/42.5
<b>Dimension &amp; Weight</b>							
Net Dimension	WxDxH	mm	802x189x297	802x189x297	1080x226x335	1080x226x335	1259x282x362
	WxDxH	inch	31.57x7.44x11.69	31.57x7.44x11.69	42.52x8.90x13.19	42.52x8.90x13.19	49.57x11.10x14.25
Packing Dimension	WxDxH	mm	875x285x380	875x285x380	1155x415x320	1155x415x320	1340x450x385
	WxDxH	inch	34.45x11.22x14.96	34.45x11.22x14.96	45.47x16.34x12.60	45.47x16.34x12.60	52.76x17.72x15.16
Net/Gross Weight		kg	8.6/10.9	8.6/10.9	13.4/17	13.7/17.2	17/22.9
		lbs	18.96/24.03	18.96/24.03	29.54/37.48	30.20/37.92	37.48/50.49
<b>Stuffing Quantity</b>							
Stuffing Quantity	20'/40'/40'HQ	Indoor unit	300/630/720	300/630/720	195/400/464	195/400/464	130/264/300



## Multi-Zone Indoor Unit One-Way Cassette



Model	Indoor Unit		MCBU-06HRFN1-MW	MCBU-09HRFN1-MUO	MCBU-12HRFN1-MW	MCBU-18HRFN1-MW
<b>Performance</b>						
Power Supply		V, Ph, Hz	208/230, 1, 60	208/230, 1, 60	208/230, 1, 60	208/230, 1, 60
Air Flow Volume	H/M/L	CFM	294/258/235	294/258/235	311/282/247	351/300/207
Noise Level	H/M/L	dB(A)	37.5/35.5/32.5	37.5/35.5/31	38.5/37/32.5	44/40.5/35
<b>Indoor unit</b>						
Net Dimension	WxDxH	mm	1278x335x228	1278x335x228	1278x335x228	1278x335x228
	WxDxH	inch	50.31x13.19x8.98	50.31x13.19x8.98	50.31x13.19x8.98	50.31x13.19x8.98
Packing Dimension	WxDxH	mm	1330*335*570	1330*335*570	1330*335*570	1330*335*570
	WxDxH	inch	52.37*13.19*22.44	52.37*13.19*22.44	52.37*13.19*22.44	52.37*13.19*22.44
Net/Gross Weight		kg	19.9/36.9	20.5/37.6	20.5/37.6	20.5/37.6
		lbs	43.87/81.35	45.19/82.89	45.19/82.89	45.19/82.89
<b>Panel</b>						
Net Dimension	WxDxH	mm	1360*475*99	1360*475*99	1360*475*99	1360*475*99
	WxDxH	inch	53.54*18.71*3.9	53.54*18.71*3.9	53.54*18.71*3.9	53.54*18.71*3.9
Packing Dimension	WxDxH	mm	1435*541*165	1435*541*165	1435*541*165	1435*541*165
	WxDxH	inch	56.5*21.3*6.6	56.5*21.3*6.6	56.5*21.3*6.6	56.5*21.3*6.6
Net/Gross Weight		kg	6.5/10.3	6.5/10.3	6.5/10.3	6.5/10.3
		lbs	14.33/22.71	14.33/22.71	14.33/22.71	14.33/22.71
<b>Stuffing Quantity</b>						
Stuffing Quantity	20'/40'/40'HQ	Indoor unit	115/245/252	115/245/252	115/245/252	115/245/252

## Multi-Zone Indoor Unit 4-Way Cassette



Model	Indoor Unit		CCA3U-09HRFN1-M(C)	CCA3U-12HRFN1-M(C)	CCA3U-18HRFN1-M(C)	MCDI-24HRFN1-MTOW(GA)
<b>Performance</b>						
Power Supply		V, Ph, Hz	208/230, 1, 60	208/230, 1, 60	208/230, 1, 60	208/230, 1, 60
Air Flow Volume	H/M/L	CFM	352/305/270	379/309/261	562/485/438	705.88/635.29/547.06
Noise Level	H/M/L	dB(A)	37.5/34.5/31.5	40.5/35.5/31.5	43.5/38.5/35.5	49/46/43
<b>Indoor unit</b>						
Net Dimension	WxDxH	mm	570x570x260	570x570x260	570x570x260	830x830x205
	WxDxH	inch	22.44x22.44x10.24	22.44x22.44x10.24	22.44x22.44x10.24	32.68x32.68x8.07
Packing Dimension	WxDxH	mm	662x662x317	662x662x317	662x662x317	910x910x250
	WxDxH	inch	26.06x26.06x12.48	26.06x26.06x12.48	26.06x26.06x12.48	35.83x35.83x9.84
Net/Gross Weight		kg	14.5/17.3	16/18.6	16.2/21.3	21.4/25.1
		lbs	31.97/38.14	35.27/41.01	35.71/46.96	47.18/55.34
<b>Panel</b>						
Net Dimension	WxDxH	mm	647x647x50	647x647x50	647x647x50	950x950x55
	WxDxH	inch	25.47x25.47x1.97	25.47x25.47x1.97	25.47x25.47x1.97	37.40x37.40x2.17
Packing Dimension	WxDxH	mm	715x715x123	715x715x123	715x715x123	1035x1035x90
	WxDxH	inch	28.15x28.15x4.84	28.15x28.15x4.84	28.15x28.15x4.84	40.75x40.75x3.54
Net/Gross Weight		kg	2.5/4.5	2.5/4.5	2.5/4.5	6/9
		lbs	5.52/9.92	5.52/9.92	5.52/9.92	13.23/19.84
<b>Stuffing Quantity</b>						
Stuffing Quantity	20'/40'/40'HQ	Indoor unit	186/375/429	186/375/429	186/375/429	108/234/260